

SOLEX *OFFROAD*

YXZ1000R/SS/SE/XTR 3" Hood Lift PRO Installation Instructions All Years



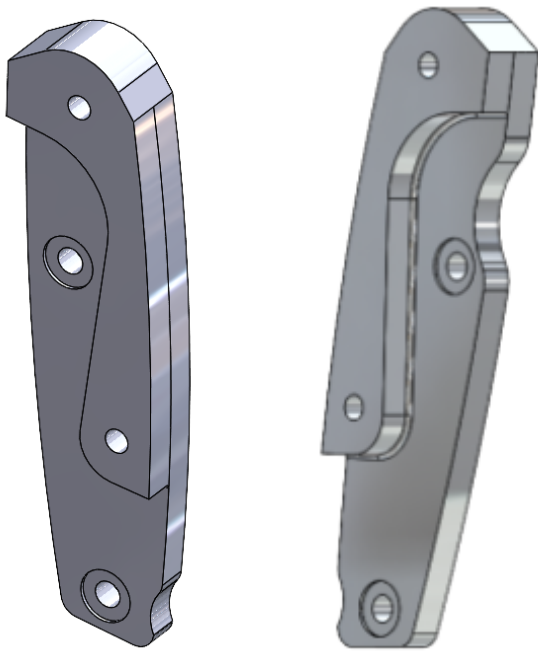
Disclaimer

By purchasing, installing, or using any product from Solex Offroad, the customer acknowledges and accepts full responsibility for any risks associated with its use. Solex Offroad and Solex Enterprises LLC are not liable for any damages, injuries, accidents, losses, or deaths that may result from the installation, use, or misuse of its products. Offroad powersports is an inherently dangerous activity that involves significant risks, including but not limited to collisions, rollovers, mechanical failures, unpredictable terrain conditions, and operator error. The purchaser assumes all risks and responsibilities associated with operating a vehicle equipped with Solex Offroad products.

All products must be installed correctly and inspected regularly to ensure proper function and safety. Installation should be performed by a qualified professional. By purchasing and using Solex Offroad products, the customer expressly waives any claims against Solex Offroad and Solex Enterprises LLC, their owners, employees, affiliates, and distributors for any liability, injury, or loss incurred. If you have any questions about product safety, installation, or usage, please contact Solex Offroad before proceeding.

Parts List

(Qty 2) Machined Headlight Brackets

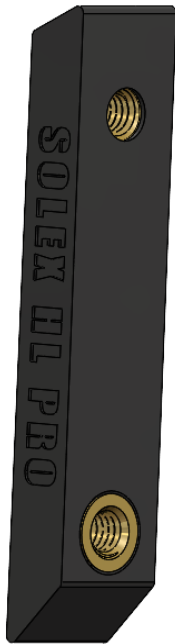


(Right Bracket) (Left Bracket)

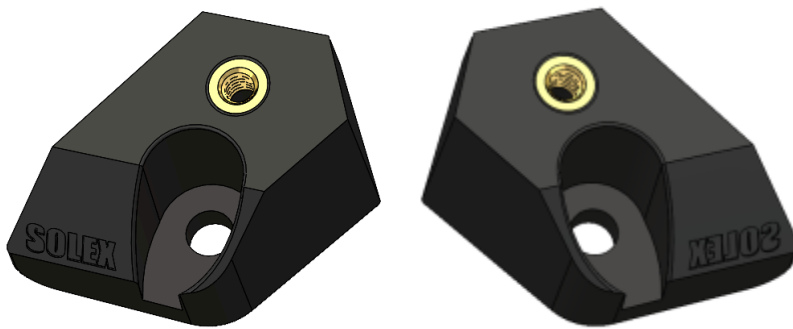
(Qty 1) Bottom Headlight Housing Plate



(Qty 1) Front Nose Bracket



(Qty 2) Front Scoop Brackets (mirrored opposites)



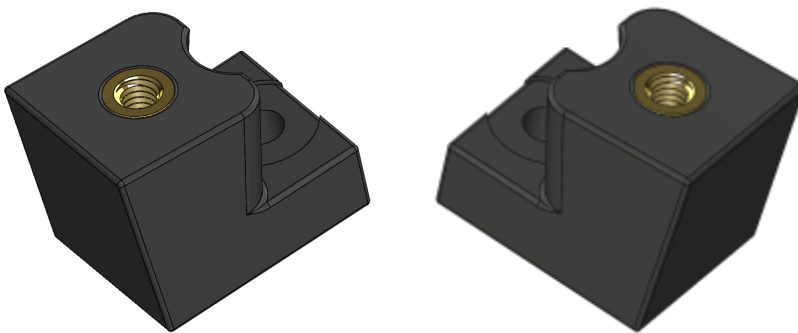
(Qty 2) Upper Headlight Brackets (mirrored opposites)



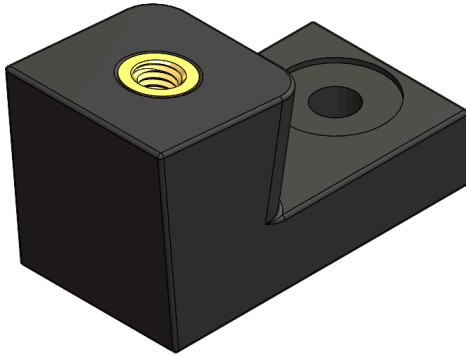
(Qty 2) Side Scoop Brackets (mirrored opposites)



(Qty 2) Rear Hood Brackets



(Qty 1) Rear center Scoop Bracket

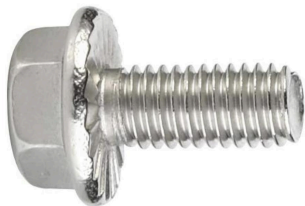


(Qty 2) M6x8mm stainless steel bolts



NOTE: Newer kits will not include M6x8mm bolts. See next item for more details.

(Qty 11) M6x12mm stainless steel bolts



NOTE: Newer kits will include a total of 13 bolts instead of 11. Along with these two additional bolts, two 4mm thick black polymer washers will also be included.



(Qty 2) M6x16mm stainless steel bolts



(Qty 3) M6x20mm stainless steel bolts



(Qty 2) M6x20mm stainless steel bolts with polymer shoulder washers and M6 locking nuts



(Qty 4) M8x20mm stainless steel bolts



Note: Some bolts may come installed into brackets.

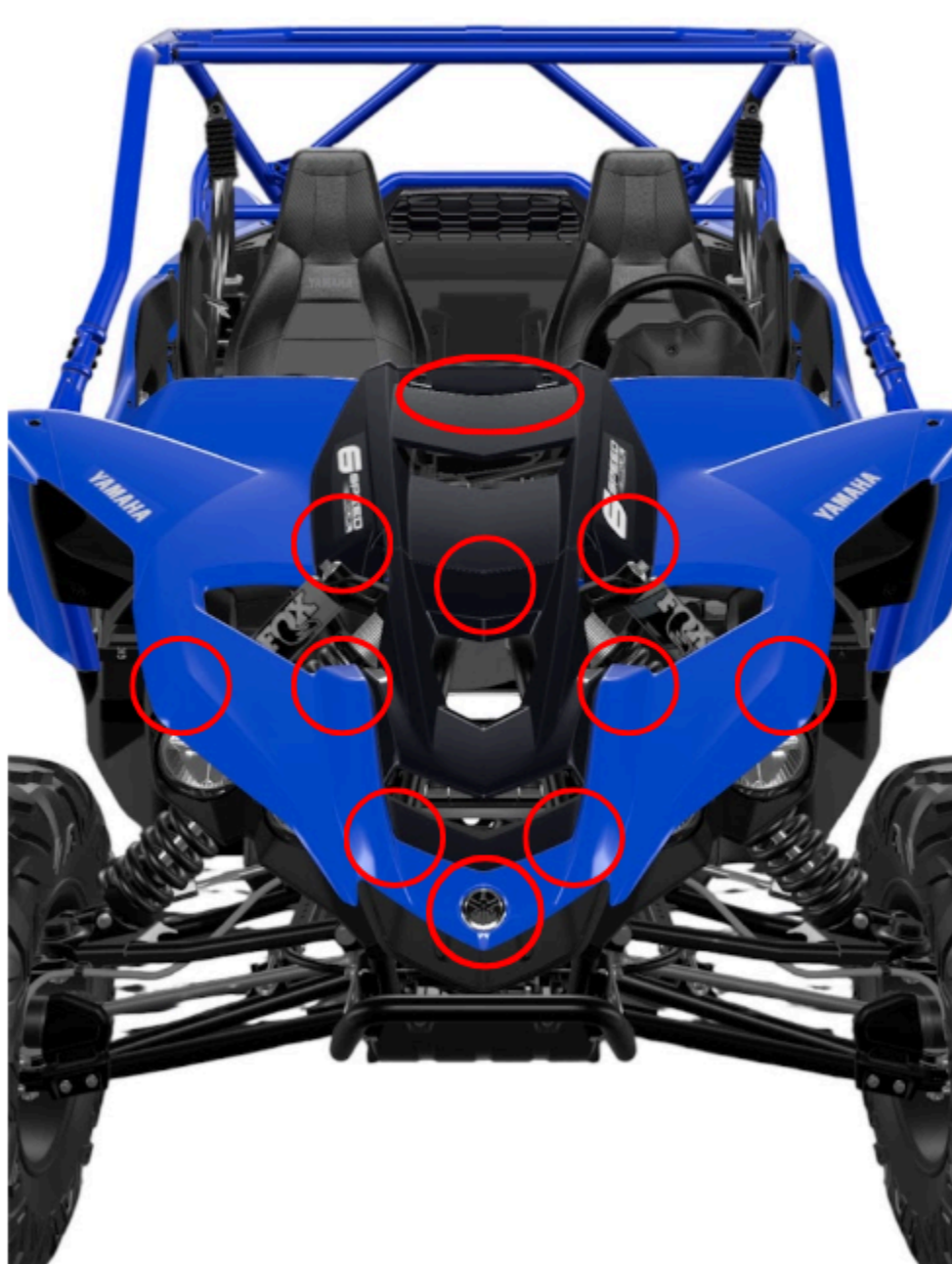
(Qty 2) Screw-in plastic expansion fasteners (Yamaha 90269-07805)



Note: screw-in plastic expansion fasteners will come pre-installed into brackets.

Installation Instructions

All OEM fasteners and clips holding the front fenders, headlight housing, and center hood to the frame will need to be removed to begin the installation. The general areas where these fasteners are circled in red below with more detail in the following steps. Note that this applies for ALL YEARS.



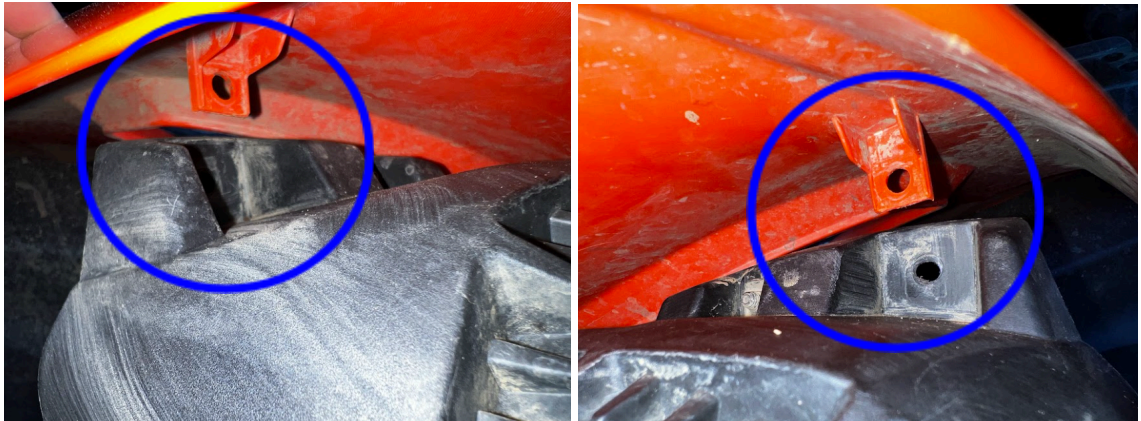
All of the following body clips installed on the front fenders will need to be removed. They will NOT be used with the new brackets and fasteners.



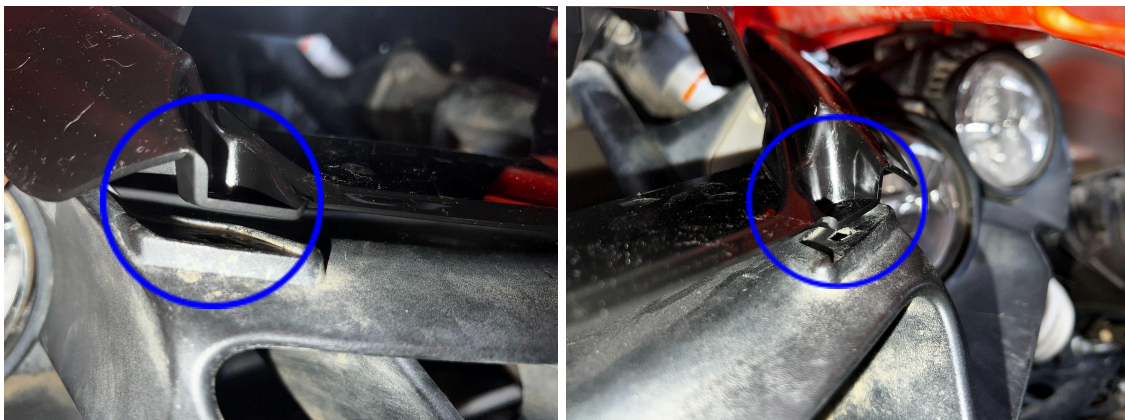
1. Remove the single OEM bolt and clip from the front nose so it looks like below.



2. Remove the upper outer headlight housing bolts and clips that connect to the fenders. Remove both sides. It should look like below (left and right).



3. Remove the front scoop rivets so it looks like below (left and right). These are located behind the front nose fastener on both sides. **Save these rivets - they will be reused.**

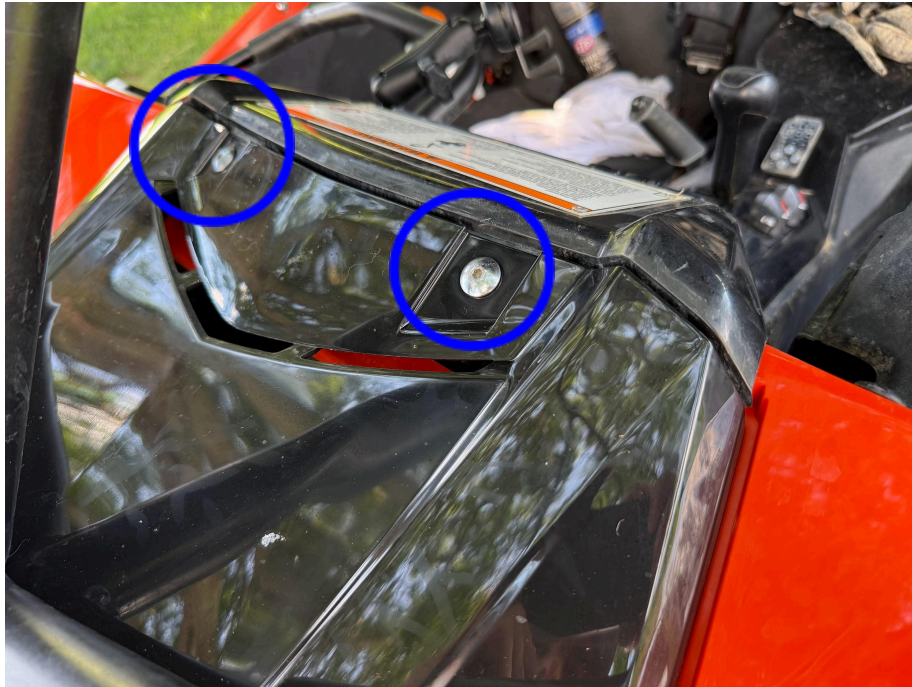


4. Remove the rivet clips that connect the rear of the center scoop section to the fenders (remove both sides). These are located just in front of the shocks. **Save these clips - they will be placed back.**

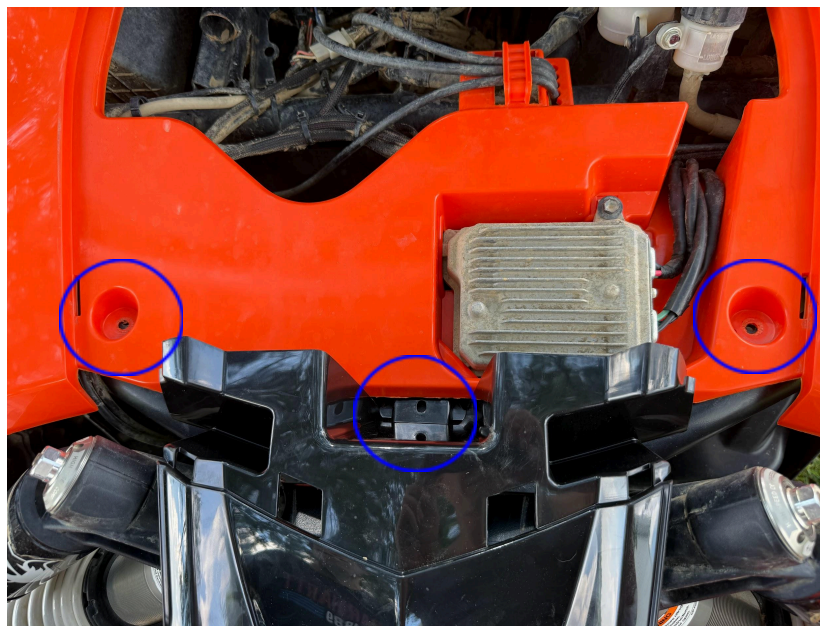




5. Remove the upper scoop fasteners, near the dash. Remove the upper scoop section by lifting and pulling back (towards the dash). **Save these bolts - they will be reused.**



6. Remove the two bolts connecting the front fender section to the frame. Remove the center bolt holding the lower scoop section to the frame.



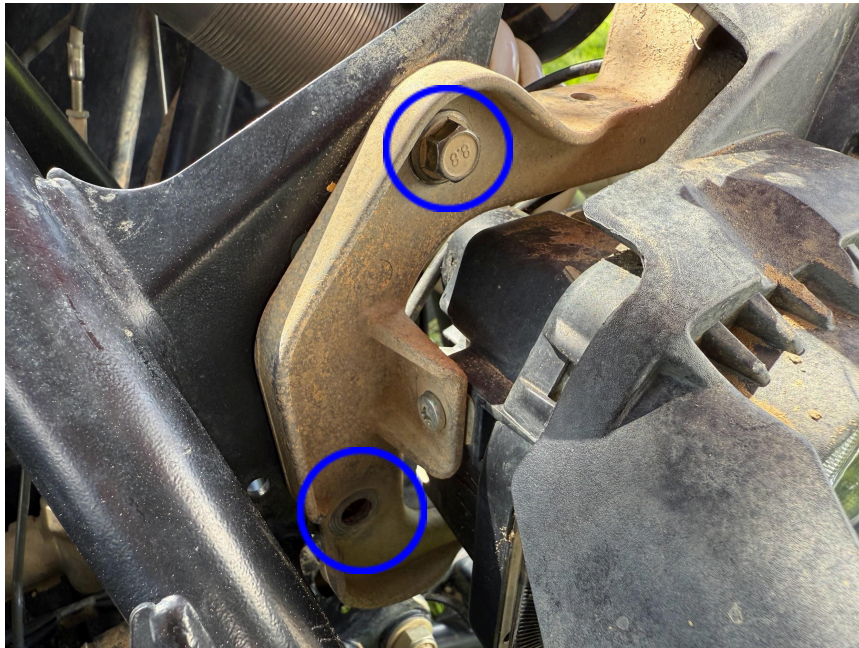
7. Remove the side scoop rivet clips that connect the center hood scoop to the top of the aluminum headlight frame. Remove both sides (right and left shown below, respectively). Remove the lower scoop section.



8. Remove the front, lower bolts holding the headlight housing to the frame.



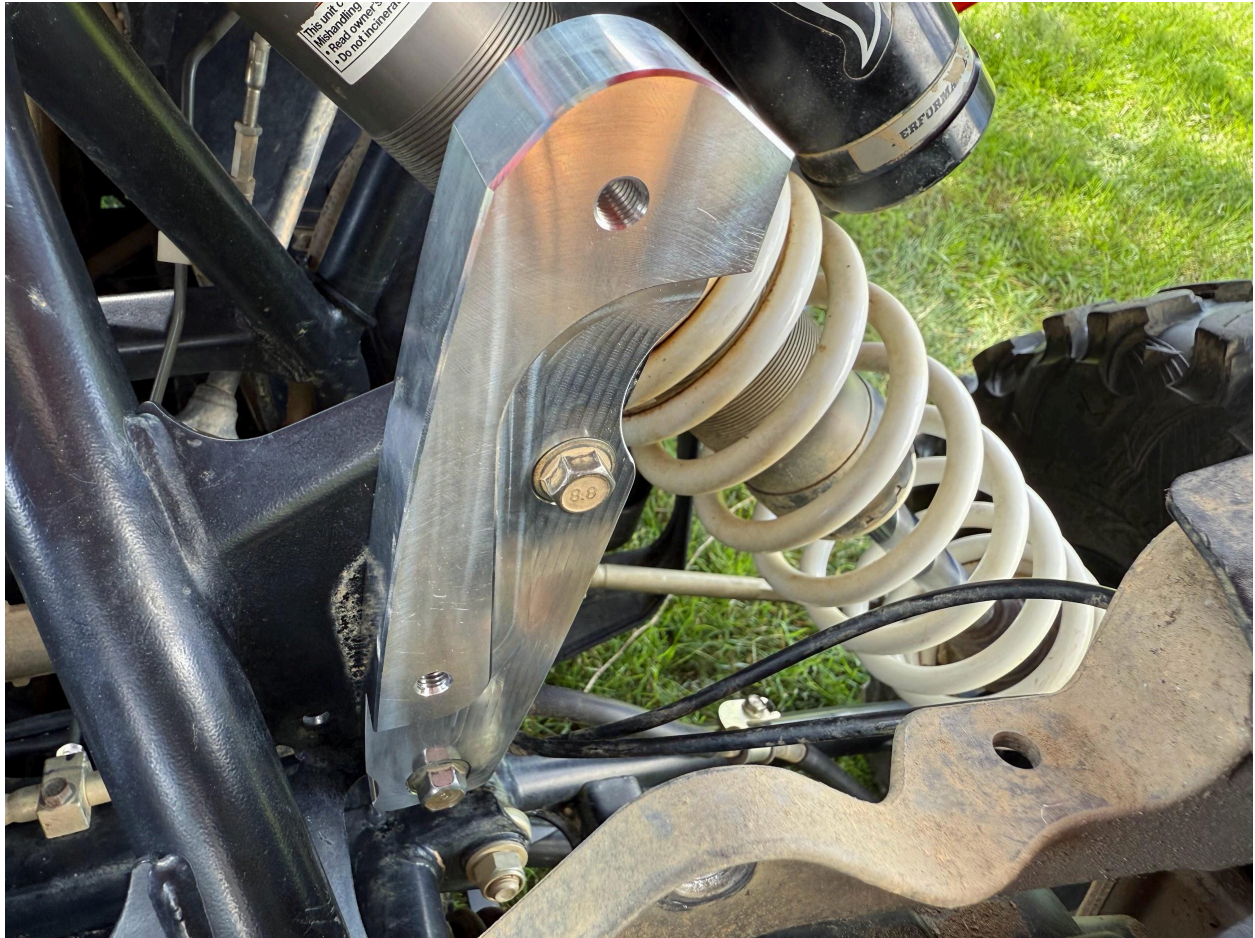
9. Remove the four M8 bolts holding the headlight housing to the frame. Carefully lower the headlight housing assembly - connectors to the headlights can stay in place. Note that the lower bolts circled in the below images have already been removed. **Save these bolts - they will be reused.**



10. Install the machined headlight brackets onto the frame using the **supplied** M8x20mm bolts. NOTE: The bracket with the “notch” on the long side is installed on the left (from drivers view perspective). Install the bolts by hand before final tightening to prevent cross-threading. NOTE: the hex-head bolts shown in the images may differ from the M8 bolts received in your kit.



*Shown Above: Right and Left machined headlight brackets
(respectively)*

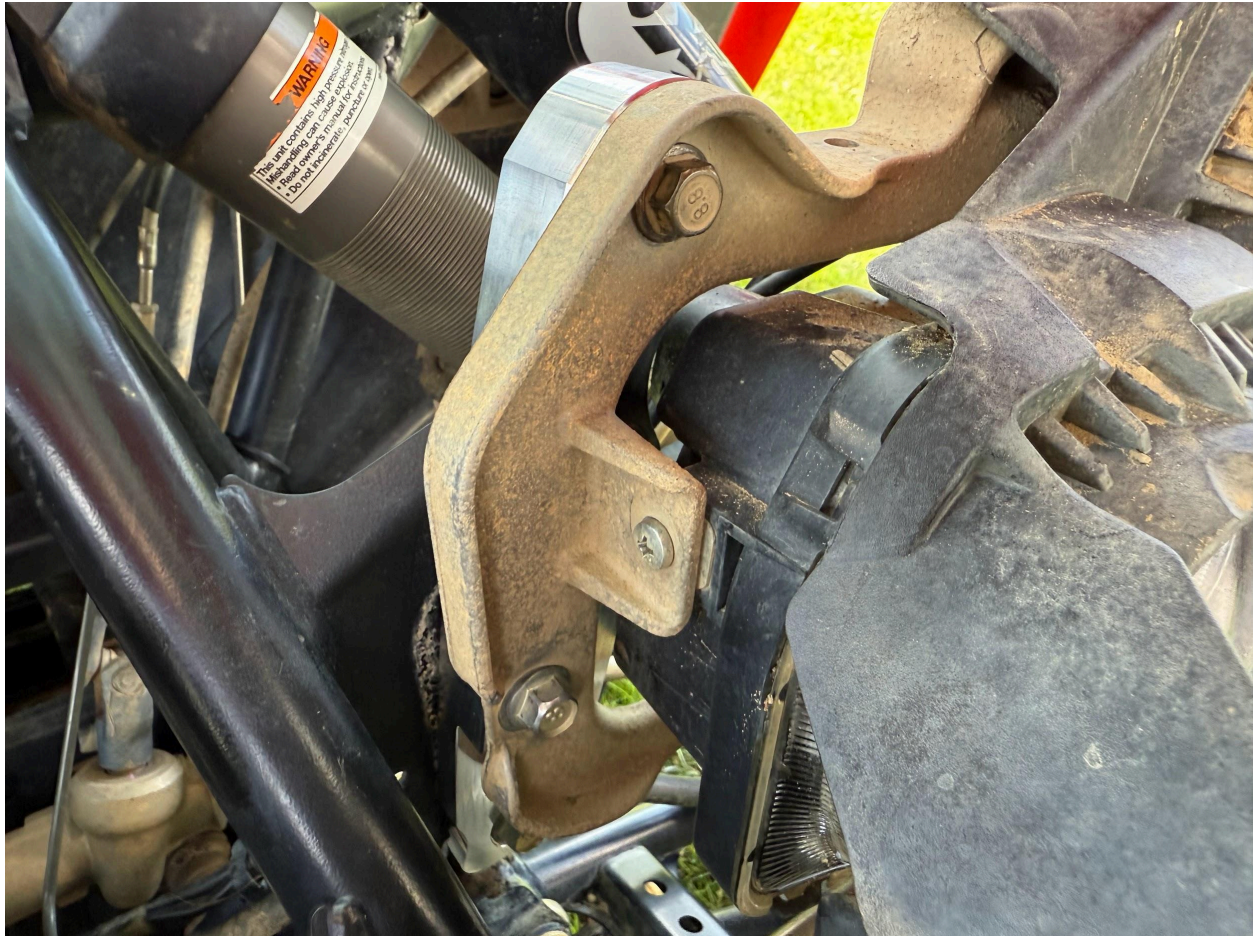


Shown above: Left headlight bracket (with notch) installed



Shown above: Right headlight bracket installed

11. Install the headlight housing assembly to the machined headlight brackets. Use the M8 OEM bolts retained from step 9. Insert the bolts by hand before final tightening to prevent cross-threading.





12. Insert the bottom headlight housing plate through the center hood gap. Slide it between the bottom headlight housing mounts and frame mounts.
 - a. Install the two bottom frame bolts (**supplied M6x16mm bolts**) - ensure not to cross-thread.
 - b. Install the M6x20 headlight housing bolts along with the supplied M6 locking nuts and flange washers.



Shown above: Placing the bottom headlight housing plate



Shown above: Installed bottom frame bolts (M6x16mm)



Shown above: Installed headlight housing bolts (supplied M6x20 bolts with flanged polymer washer and locking nuts on back)

13. Install the rear hood brackets to the frame with the supplied M6x20mm bolts. NOTE: do not tighten all the way down immediately - swing into place to align with the hood mounting holes then tighten. Install the rear center scoop bracket to the frame with a supplied M6x20mm bolt - align straight towards the front.





14. Remove the screw pins from the rivets **saved from step 3**. Install the bottom expansion pin into the bottom scoop brackets. Place the bottom brackets so that they align with plastics below the front scoop mounts. Reinstall the screw pins using a large flat head screwdriver until they are secure. **Do not over tighten.** See below (install left and right bottom brackets). **Do not install the stainless steel bolts yet.**



15. Remove the screw pins from the side scoop brackets. Install the left and right side scoop brackets atop the aluminum OEM headlight brackets. Reinsert the screw pins using a large flat head screwdriver so that the brackets tighten against the aluminum headlight housing. **Do not overtighten. NOTE THE ORIENTATION SHOWN IN THE BELOW IMAGE AS THE ANGLED SIDE SHOULD BE TOWARDS THE OUTSIDE OF THE MACHINE.**



Shown above: right side side scoop bracket

16. Place the left and right upper headlight brackets into their slots on top of the headlight housings. Ensure they are pressed all the way back. Note that the brackets are mirrored and only fit properly on one side. Install the supplied M6x12mm bolts to attach the brackets to the headlight housings. **Do not install the top bolts yet.**



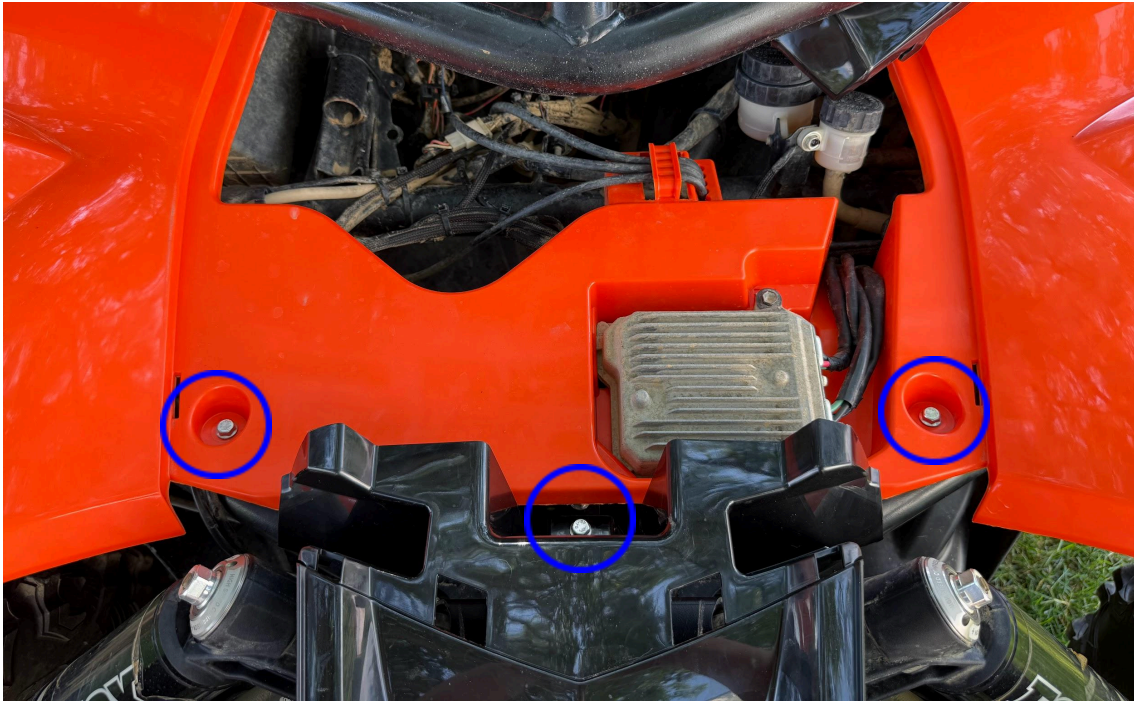
17. Place the bottom hood scoop section. Install the M6x12 bolts through the front scoop tabs and into the front scoop brackets. Tighten the bolts down but do not overtighten. Hold the bracket steady while tightening to avoid twisting.



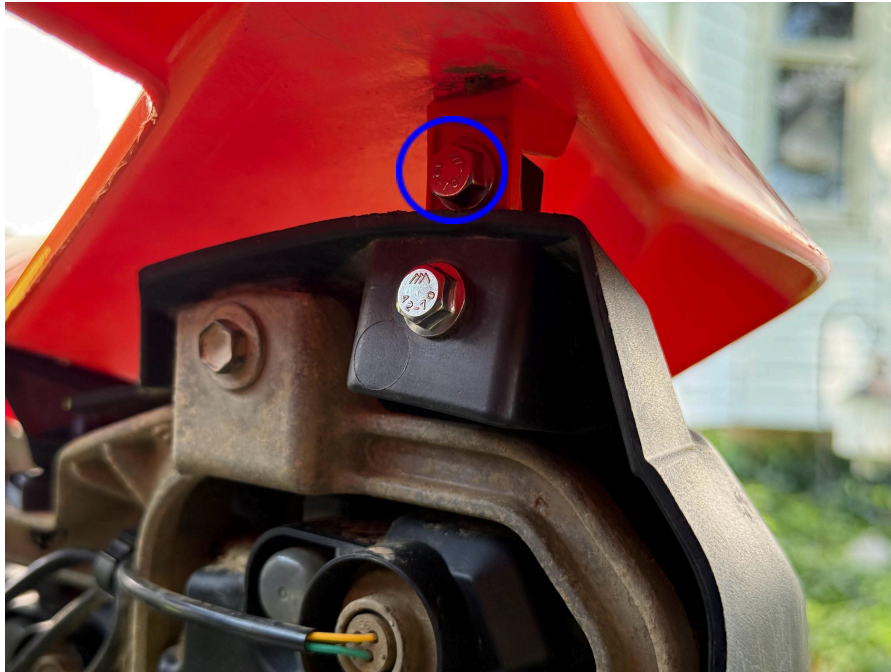
18. Install the side scoop mounting bolts (supplied M6x8mm) into the already mounted brackets. **NOTE:** If your kit came with two additional M6x12mm bolts and polymer washers instead, use these. Hold the bracket steady while tightening to avoid twisting. **Do not overtighten.**



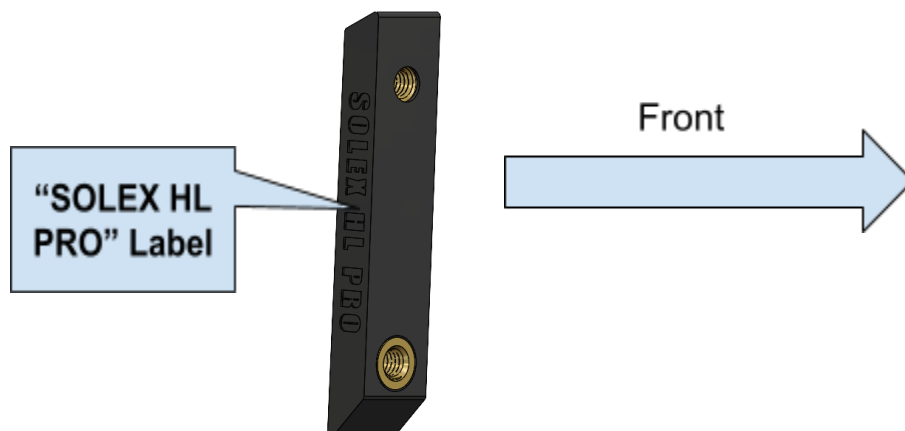
19. Install the rear fender mount bolts (supplied M6x12mm) and rear center scoop mounting bolt (supplied M6x12mm). **Do not overtighten.**

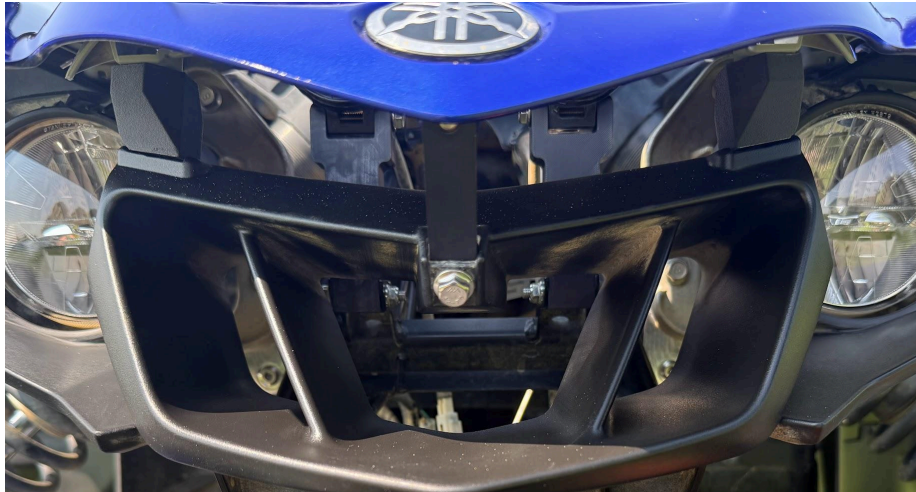


20. Install the upper headlight bracket bolts (supplied M6x12) through the fender into the already installed left and right brackets from step 16. **Do not overtighten.**

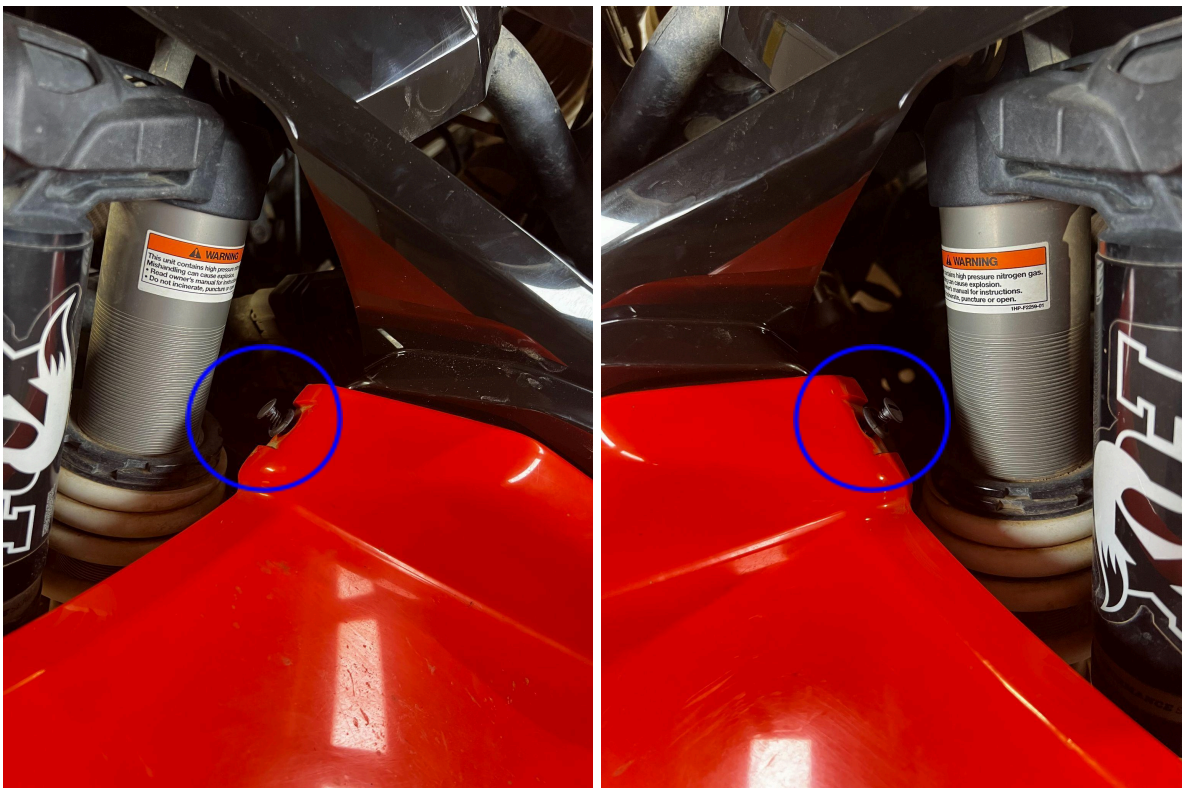


21. Install the front nose bracket by sliding it into place with the angled side down and lettering pointing towards the passenger side (see below). Secure with two supplied M6x12mm bolts. The upper one is installed from the back side. **Do not overtighten.**





22. Reinstall the plastic rivets (both sides) kept from step 4 that hold the rear of the center scoop section to the front fenders.



23. Reinstall the upper scoop section by reversing the procedure in **step 5**. Ensure the side slots are locked into place by pushing

the scoop down and sliding it towards the bottom scoop section.
Secure with the top bolts removed in **step 5**.

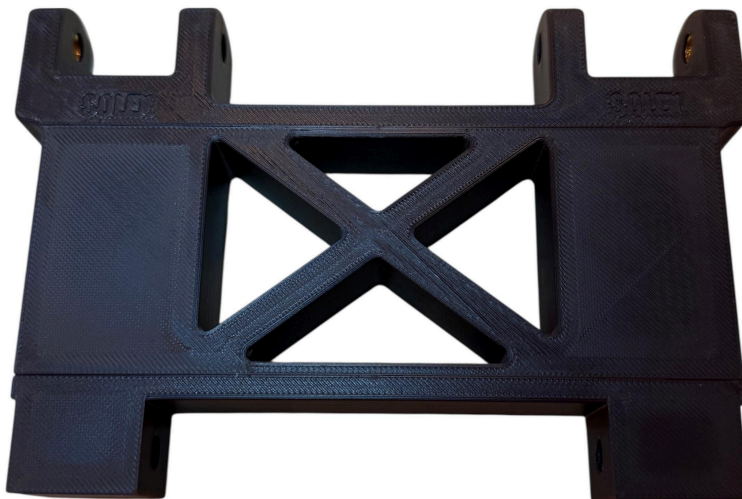
24. Your hood lift kit is now installed. Double check all connections to ensure a tight fit is achieved.

Continue if Utilizing Optional XTR/SS SE Package

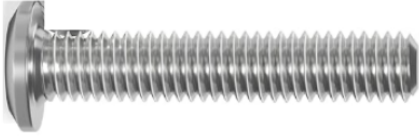
NOTE: Continue if you have an XTR or SS SE model and are equipping it with the option “XTR SS SE light bracket”. Ignore the following instructions if you do not have one of these models or are using a standard kit only.

Parts List

(Qty 1) Center Pod Lights X-Brace



(Qty 2) M6x45mm Flat Head Bolts



(Qty 2) Light Plug Extensions



Note: bolts may come installed into brackets.

Installation Instructions

1. Remove the bolts holding the center lights to the frame brackets (circled in the below image).



2. **ENSURE THE FRONT POD LIGHTS ARE TURNED OFF.
REMOVE THE KEY FROM THE MACHINE FOR SAFETY.**
Unplug and remove the center lights from the machine.
3. Install the center light lift bracket onto the frame tabs on the YXZ.
Ensure the label "SOLEX" is facing the front of the machine.
Utilize the OEM fasteners to secure the bracket to the frame.

4. Secure the light pods to the top of the X-bracket by tightening the supplied M6x45mm bolts - do not overtighten. These bolts may be a little tight installing - this is normal.
5. Install the supplied extension wires between the OEM harness and pod lights. Ensure both connector ends positively “click” into place. Route the wires such that they remain loose and are not kinked. Secure with zip-ties where necessary.
6. Double check all fasteners and connectors are tight. Turn the center pod lights on to ensure functionality. Adjust the light angle by loosening the upper mounting bolts if necessary. Your XTR/SS SE light pod lift is now installed.



These instructions are not for redistribution or copy unless otherwise approved by Solex Enterprises LLC.